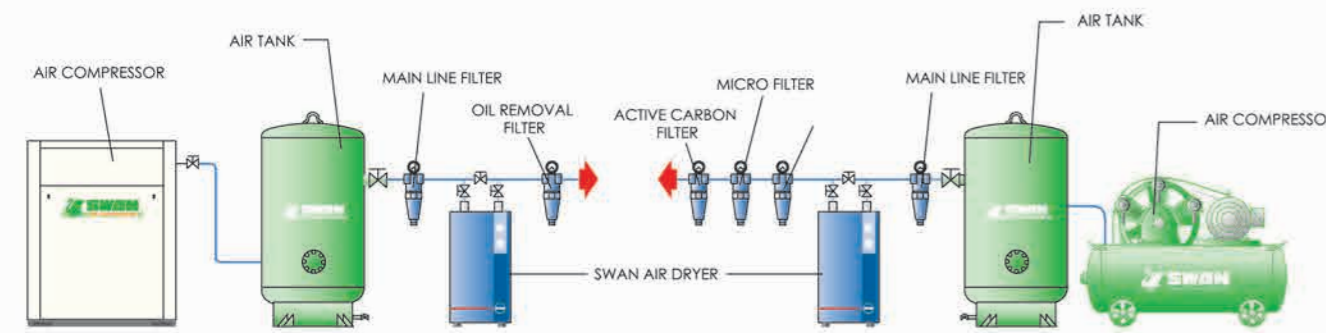
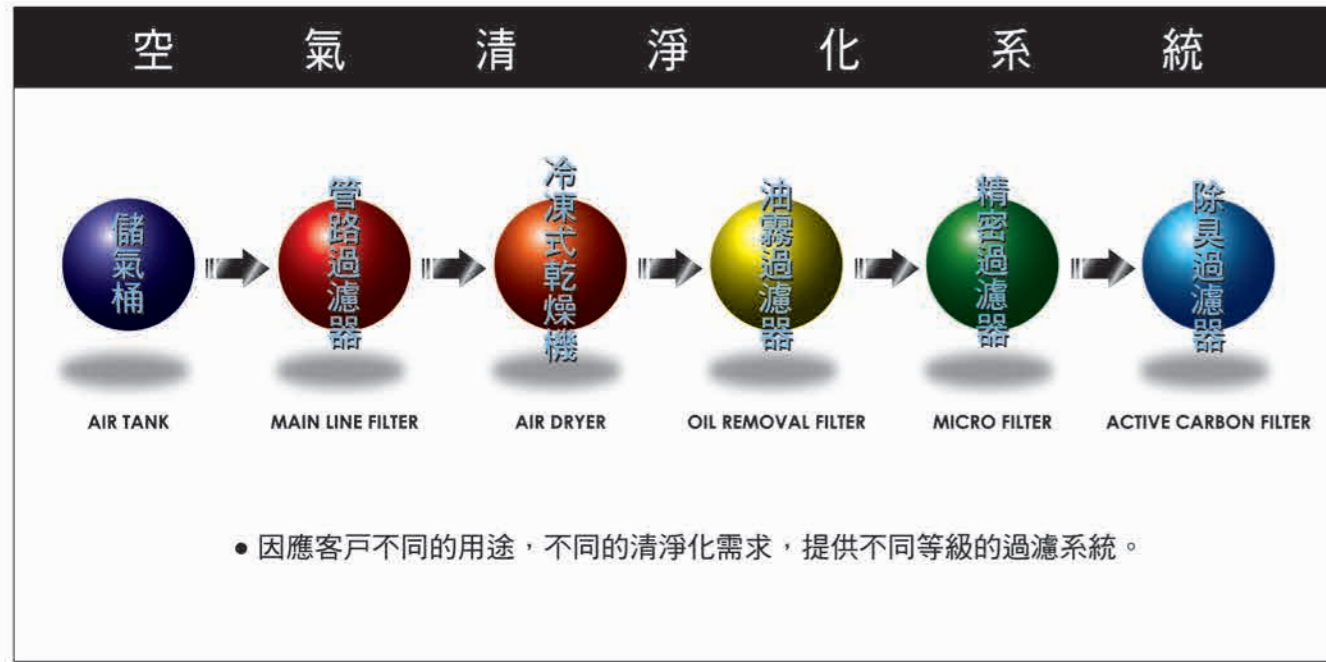


Compressed Air Cleaning System

Comprehensive range of filters to meet the requirement from different industrial user.



東正鐵工廠 股份有限公司

公司：台中市東區信義街116號
 TEL:886-4-2261-2135 FAX:886-4-2261-5465
 廠址：台中市南區大慶街二段16號
 TEL:886-4-2261-2135 FAX:886-4-2262-8246
 公司網站：www.swanair.com.tw
 電子郵件：swantc@swanair.com.tw

台北營業所：台北縣五股工業區五權五路43號
 TEL:02-2299-1285 FAX:02-2298-2296
 台中營業所：台中市南區大慶街二段16號
 TEL:04-2261-2135 FAX:04-2261-5465
 台南營業所：台南縣永康市中正南路635號
 TEL:06-253-9848 FAX:06-253-9849



TONG CHENG IRON WORKS CO., LTD.

Head office :
 16 Ta Chin St. Sec.2, Taichung, Taiwan
 TEL:886-4-2261-2135 FAX:886-4-2262-8246
 website:www.swanair.com.tw
 E-Mail:swantc@swanair.com.tw

Reg. Office :
 116 Shing Yee St., Taichung, Taiwan
 TEL:886-4-2261-2135 FAX:886-4-2261-5465

天鵝牌 TS系列 智慧型螺旋式空氣壓縮機



SCREW AIR COMPRESSOR TS SERIES SMART AIR POWER 15HP~50HP



TS系列 智慧型螺旋式空氣壓縮機 Smart Air Power - TS Series 15HP~50HP



此系列空壓機含原裝進口的高效率主機，堅實的全密馬達，精密的油過濾系統，模組化的進氣調節系統，達到完美的組合及最高的信賴度。

The series of Compressor is equipped with highly efficient Screw Air-end, totally enclosed fan-cooled powerful electric Motor, precise oil Filtering/Separating components and modulating Suction Regulator.. etc, built to a complete Unit with perfect integration and highest reliable System.





● 穩定可靠的最佳選擇

High levels of distinctive modular design

新一代TS系列，以模組化的設計理念，強化整體信賴性、維護簡易性與運轉安靜性。主機與精密控制零件，以穩定的品質貼合使用者真正需求，是您可靠的最佳選擇。

With distinctive modular design and friendly operating system, the new developed TS series are able to provide reliable operation, quiet running mechanism and easy maintenance. The adoption of high efficiency Airend is dependable in highly powerful performance.

● 耐用低噪音的運轉環境

Powerful and quiet running condition

結實的框架式結構與優良的噪音隔離，降低運轉時產生的噪音與震動。高效率冷卻器設計，確保長期的運轉效能。

High Rigid Structure with anti-noise and high efficient air circulation system design to ensure silent running and long-term operation capability.



● 簡明實用的控制系統

Versatile and Users' friendly control system

人性化的流程式控制面板，清晰顯示運轉狀況以易於控制及安排保養；支援遠端與多機操控，強化模組式電控與過載保護。

The machine is equipped with versatile module control, friendly operation monitor, multi-units remote control and overload protection deviceetc, which make it easy to operate and maintain.

● 快速方便的保養設計

Easy Maintenance

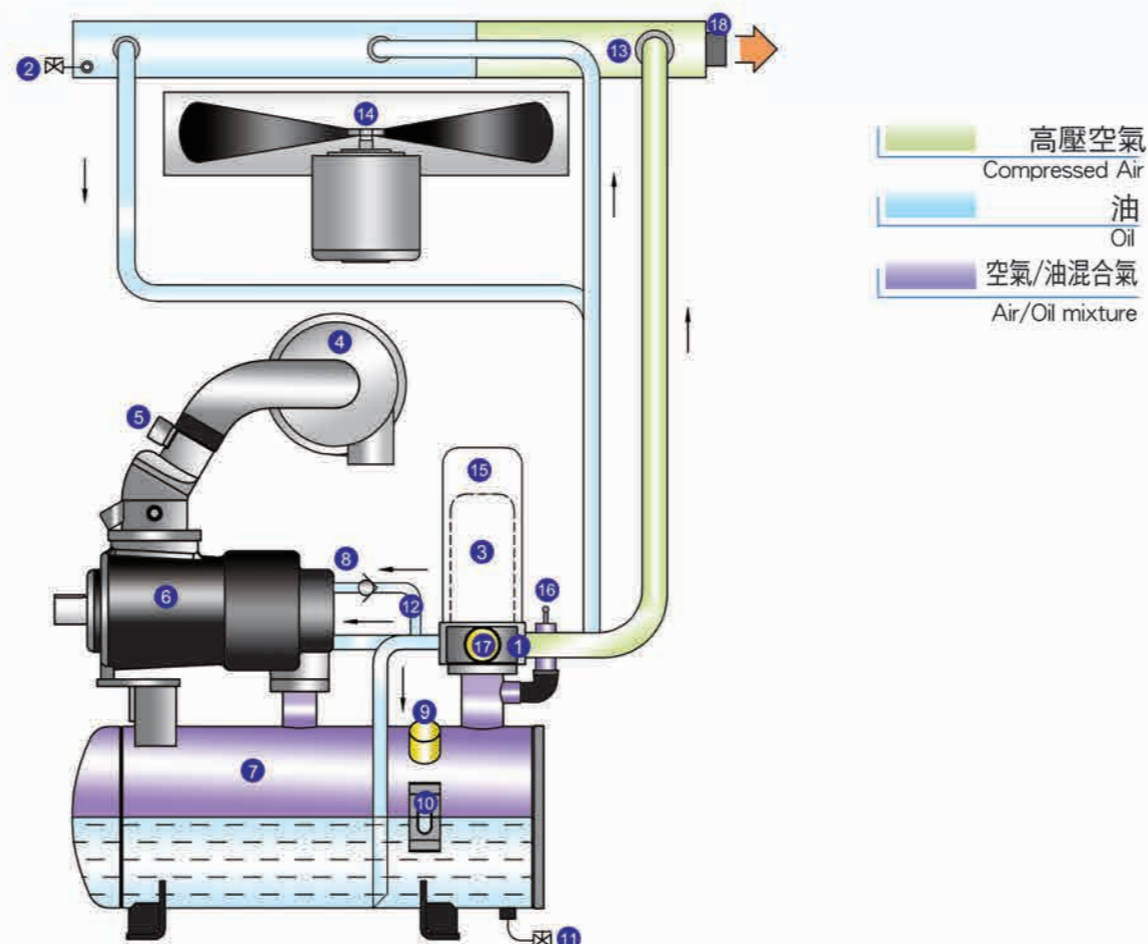
維護調校採用同向查檢點配置，易於查檢與耗材更換。門扣式鈹金設計，拆裝方便，省時省力。

Easy to access to all related components, make trouble-shooting and general maintenance easy and inexpensive.

TS系列 智慧型螺旋式空氣壓縮機

TS Series

● 空氣/油 流程圖 AIR/OIL flow Diagram



- | | | |
|---|---|--|
| 1 多功能組合閥
Multi-function valve Assembly | 7 油回收槽
Oil Recovery Tank | 13 組合式冷卻器
Oil /Air cooler |
| 2 洩油閥(油冷卻器)
Oil drain valve (Oil cooler) | 8 油回收逆止閥
Oil Check valve | 14 風扇馬達組
Cooling Fan and Motor |
| 3 油過濾器
Oil filter | 9 加油口
Oil fill port | 15 油氣分離元件
Oil Separator element |
| 4 進氣濾清器
Suction | 10 油位鏡
Oil level gauge | 16 安全閥
Safety valve |
| 5 進氣調整閥
Suction Regulator | 11 洩油閥(油氣分離槽)
Oil drain valve (Oil reclaiming) | 17 保壓逆止閥
Minimum pressure check valve |
| 6 機體
Air end | 12 油回收管
Oil recovery pipe | 18 壓縮空氣出口
Air outlet |

Superior Performance

Highest Reliability

● 規格 Specification

型式	Model	TS-11-S	TS-15-S	TS-22-S	TS-37-S
吸氣條件 Suction Conditions	壓力 Pressure (IATM) 溫度 C Temperature	大氣壓 ATM 2~40	大氣壓 ATM 2~40	大氣壓 ATM 2~40	大氣壓 ATM 2~40
排氣條件 Discharge Conditions	壓力 Pressure (kg/cm ² .G) 溫度 C Temperature	8.5 10 13 環境溫度+12°C Environmental Temp+12°C	8.5 10 13 環境溫度+12°C Environmental Temp+12°C	8.5 10 13 環境溫度+12°C Environmental Temp+12°C	8.5 10 13 環境溫度+12°C Environmental Temp+12°C
電源頻率	Frequency (HZ)	50 / 60	50 / 60	50 / 60	50 / 60
排氣量	FAD m ³ / min	1.6 1.4 1.1	2.0 1.9 1.6	3.4 3 2.4	5.9 5.3 4.5
實際馬力	Motor Output kw(HP)	11KW(15HP)	15KW(20HP)	22KW(30HP)	37KW(50HP)
冷卻方式	Cooling	氣冷式 Air-cooled	氣冷式 Air-cooled	氣冷式 Air-cooled	氣冷式 Air-cooled
傳動方式	Drive system	皮帶傳動 Belt drive	皮帶傳動 Belt drive	皮帶傳動 Belt drive	皮帶傳動 Belt drive
出風口徑	Air delivery connection	1"	1"	1-1/4"	1-1/2"
噪音值	dB(A)	70	70	70	74
外型尺寸	Dimension (mm) LxWxH	780X900X1050	780X900X1050	1100X920X1350	1200X1200X1650
重量	Weight (kg)	400	410	600	850

※本公司不斷研究改進，規格如有變更，恕不另行通知。
Keep on developing for excellence, we reserve the right to alter specifications without prior notice.
※規格外之壓力、排氣量、空壓設備，詳細資料歡迎與本公司洽詢。
Other special discharge, pressure and drive type are available upon request.

